

Maschinenvertrieb

P R E S E N T S

A NEW GENERATION



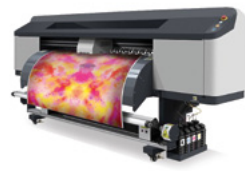
 **LIYU**
INTERNATIONAL

PRINTERS



TEXUMA

Page 4 - 5



PROXIMA
PROXIMA Deco-LED

Page 6 - 7
Page 8 - 9



INEXU

Page 10 - 11



INNO UV LED

Page 12 - 13



INNO SPEED
INNO

Page 14 - 15
Page 16 - 17



MAXIMA

Page 18 - 19

TEXUMA

The Textile pro



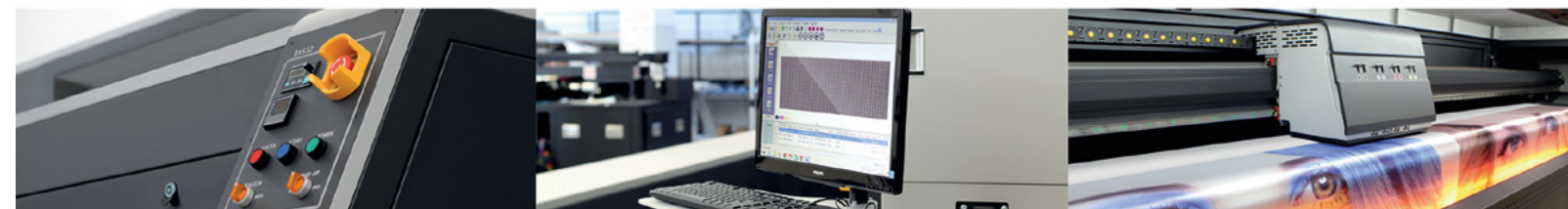
KONICA MINOLTA | Panasonic

2880
dpi

Textile Printer, with its impressive modern integrated design incorporating an in line callender. Print width of 320 cm, print speed up to 210 m²/h, 2880 dpi resolution and 14 PL droplet volume, now makes it possible to produce fantastic bright textiles with saturated colours, quickly and easily

Technical Specifications

Printing Heads	KM 512i / KM 1024i
Printhead Quantity	8
Drop Volume	14 Pl.
Colour Scale	CMYK
INK	Reactive / Pigment / Sublimation
Drying System	Halogen Heater & Fan
Fixation Unit	3200 mm
Print Width	3200 mm
Print Resolution	2880 dpi
Printing Speed Up to	210 m ² /h
RIP Software	Photo Print 11
Hardware	PC / LCD Monitor
Power Requirement	230 V (+/-) / 32 A / 50 Hz
Machine Size Fixation Unit	1100 mm x 5200 mm x 2000 mm
Machine Size	3000 mm x 5200 mm x 2000 mm
Machine Weight	2900 kg.



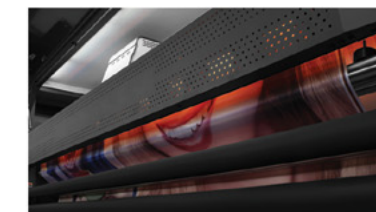
KONACA MONOLTA KM 512i - 1024i
14 Picoliter Printing Heads



PANASONIC
Servo Motor Transmission System



INK TYPE
REACTIVE / PIGMENT / SUBLIMATION
DISPERSE



HIGH RESOLUTION
Excellent Printing
Quality

PRINT SPEED TEXUMA BASIC (512ix4) TEXUMA CLASSIC (512ix8) TEXUMA PRO (1024ix8)

DRAFT MODE 100 m²/h 210 m²/h 210 m²/h

PRODUCTION MODE 55 m²/h 100 m²/h 100 m²/h

QUALITY MODE 27 m²/h 50 m²/h 50 m²/h



CURTAINS



FLAGS



BED COVERS



CLOTHINGS



WALL COVERINGS



TABLE CLOTHES



PILLOW COVERS



SEAT COVERS

PROXIMA

The Transferprinter



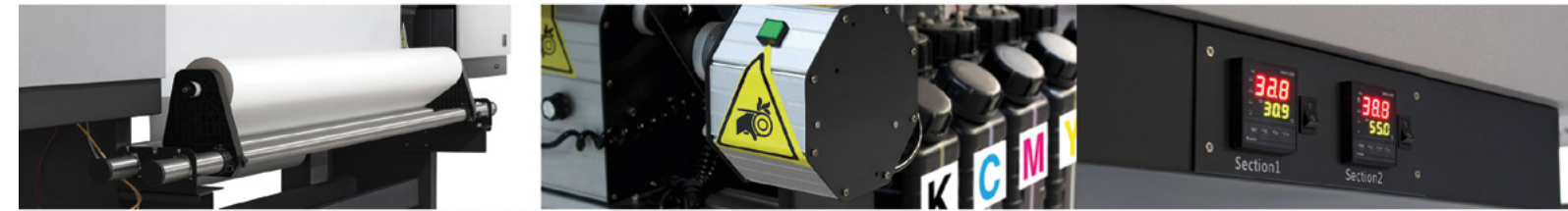
KONICA MINOLTA | Panasonic

1440
dpi

Transfer paper printer with an impressive modern design. Print width of 180 cm, print speed up to 150 m²/h, 1440 dpi resolution and 6 PL droplet volume for fast, reliable printing ready for transfer onto any receptive material.

Technical Specifications

Printing Heads	KM 512i
Printhead Quantity	4 - 8
Drop Volume	6 PL
Colour Scale	CMYK
INK	Sublimation
Drying System	Heater
Print Width	1800 mm
Print Resolution	1440 dpi
Printing Speed Up to	150 m ² /h
RIP Software	Photo Print 11
Hardware	-----
Power Requirement	230 V (+/-) 10% / 32 A / 50 Hz
Machine Size	3350 mm x 980 mm x 1540 mm
Machine Weight	730 kg.



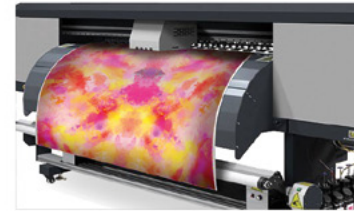
KONACA MONOLTA KM 512i
Printing Heads



PANASONIC
Servo Motor Transmission System



INK TYPE
Sublimation



HIGH RESOLUTION
Excellent Printing
Quality

PRINT SPEED	PROXIMA CLASSIC (512ix4)	PROXIMA PRO (512ix8)
DRAFT MODE	75 m ² /h	150 m ² /h
PRODUCTION MODE	57 m ² /h	115 m ² /h
QUALITY MODE	37 m ² /h	75 m ² /h
FINE ART MODE	18 m ² /h	37 m ² /h



CURTAINS



FLAGS



BED COVERS



CLOTHINGS



WALL COVERINGS



TABLE CLOTHES



PILLOW COVERS



SEAT COVERS

PROXIMA Deco-LED



KONICA MINOLTA | Panasonic



Deco-UV Printer, modern design, print width of 180 cm, print speed up to 150 m²/h, 1440 dpi resolution and 6 PL droplet volume, making it possible to produce high quality prints quickly and effortlessly

Technical Specifications

Printing Heads	KM 512i
Printhead Quantity	4 - 8
Drop Volume	6 Pl.
Colour Scale	CMYK
INK	UV
Drying System	UV - Curing
Print Width	1800 mm
Print Resolution	1440 dpi
Printing Speed Up to	150 m ² /h
RIP Software	Photo Print 11
Hardware	-----
Power Requirement	230 V (+/-) 10% / 32 A / 50 Hz
Machine Size	3350 mm x 980 mm x 1540 mm
Machine Weight	730 kg.



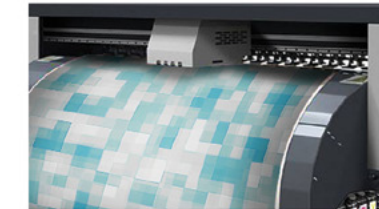
KONICA MINOLTA KM512i
6 Picoliter Printing Heads



PANASONIC
Servo Motor Transmission System



UV
Curing System

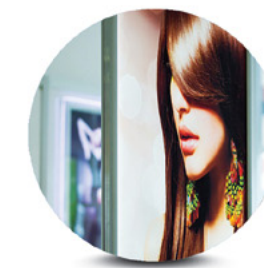


HIGH RESOLUTION
Excellent Printing
Quality

PRINT SPEED	PROXIMA DECO-LED CLASSIC (512x4)	PROXIMA DECO-LED PRO (512x8)
DRAFT MODE	75 m ² /h	150 m ² /h
PRODUCTION MODE	57 m ² /h	115 m ² /h
QUALITY MODE	37 m ² /h	75 m ² /h
FINE ART MODE	18 m ² /h	37 m ² /h



WALL COVERINGS



DURATRANS



BARISOL



PHOTO PAPER

INEXU UV Printer



2880
dpi

KONICA MINOLTA | Panasonic

Flat-Bed

Make photographic quality prints on material as thin as 1 mm. The vacuum platform can hold using a max. pressure of 35 kg/m². The maximum thickness of the material for INEXU Hybrid UV is 100 mm.

Technical Specifications

Printing Heads	KM 512i / KM 1024 / KM 1024i
Printhead Quantity	4 - 12
Drop Volume	9-14 Pl.
Colour Scale	CMYK*2 / CMYK*3 / CMYK*2 (W V) / (LM LC)
INK	UV
Drying System	UV Curing
Flat-Bed Size	2500mm x 1250mm / 3000mm x 2000mm
Maximum Printing Height	100 mm
Print Resolution	2880 dpi
Printing Speed Up to	160 m ² /h
RIP Software	Photo Print 11
Hardware	PC / LCD Monitor
Power Requirement	230 V (+/-) 10% / 32 A / 50 / 60 Hz
Machine Size (2512)	2200mm x 5220mm x 1530mm
Machine Size (3020)	3000mm x 5800mm x 1530mm
Machine Weight	1370 kg.



KONICA MONOLTA / 14 Picoliter
CMYK + LC + LM + W + V
12 Printing Heads



PANASONIC
Servo Motor Transmission System



UV
Curing



LOCAL
Vacuum System

PRINT SPEED	INEXU BASIC (512x8)	INEXU CLASSIC (1024x8)	INEXU PRO (1024ix8)
DRAFT MODE	48 m ² /h	110 m ² /h	160 m ² /h
PRODUCTION MODE	24 m ² /h	48 m ² /h	80 m ² /h
QUALITY MODE	12 m ² /h	24 m ² /h	44 m ² /h
FINE ART MODE	6 m ² /h	12 m ² /h	25 m ² /h

+ Roll to Roll

With the optimal Roll to Roll printing system, INEXU Hybrid UV provides more work productivity with less space usage in your business which makes it possible to print on foil, PVC and similar roll material in addition to Flat-Bed printing system.



INNO UV

The UV-Led Inkjet



2880
dpi

KONICA MINOLTA | Panasonic



EASY
Print Software (Lyprint)



PANASONIC
Servo Motor Transmission System



AUTOMATIC
Pinch Roller System



UV - LED
Curing System

2880 dpi printing quality, automatic media measuring system, LCD control panel, UV and LED curing system, LED lighted printing area, automatic pinch roller control.

Technical Specifications

Printing Heads	KM 1024
Printhead Quantity	4 - 8
Drop Volume	14 Pl.
Colour Scale	CMYK
INK	UV - LED
Drying System	UV - LED
Print Width	320 cm
Print Resolution	2880 dpi
Printing Speed Up to	140 m ² /h
RIP Software	Photo Print 11
Power Requirement	230 V (+/-) 10% / 22 A / 50 Hz
Machine Size	950mm x 4800mm x 1520mm
Machine Weight	750 kg.

PRINT SPEED	INNO UV CLASSIC (1024x4)	INNO UV PRO (1024x8)
DRAFT MODE	70 m ² /h	140 m ² /h
PRODUCTION MODE	35 m ² /h	70 m ² /h
QUALITY MODE	18 m ² /h	35 m ² /h
FINE ART MODE	9 m ² /h	18 m ² /h



WALL COVERINGS



DURATRANS



BARISOL



PHOTO PAPER

INNO Speed

The fast Solvent - Inkjet



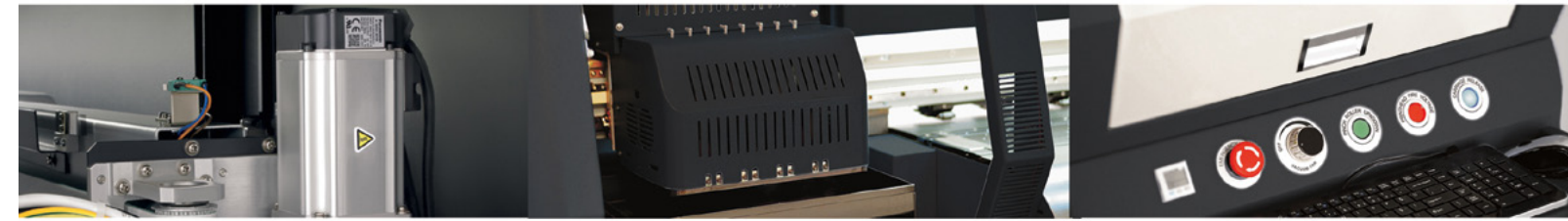
KONICA MINOLTA | Panasonic

1440
dpi

1440 dpi printing quality, automatic media measuring system, LCD control panel, adjustable local halogen heaters, LED lighted printing area, automatic pinch roller control.

Technical Specifications

Printing Heads	KM 512i MN
Printhead Quantity	4 - 8
Drop Volume	30 Pl.
Colour Scale	CMYK
INK	Solvent / Eco Solvent
Drying System	INFRARED & Heater
Print Width	320 cm
Print Resolution	1440 dpi
Printing Speed Up to	210 m ² /h
RIP Software	Photo Print 11
Power Requirement	230 V (+/-) 10% / 22 A / 50 Hz
Machine Size	950mm x 4800mm x 1520mm
Machine Weight	750 kg.



SILICONE HEATING SYSTEM
Adjustable in Pre-Printing,
Printing Plate and Post-Printing
Phases



PANASONIC
Servo Motor Transmission System



EASY
Print Software (Lyprint)



HALOGEN and INFRARED
Drying System
+ Fan Drying

PRINT SPEED	INNO SPEED CLASSIC (512ix4)	INNO SPEED PRO (512ix8)
DRAFT MODE	105 m ² /h	210 m ² /h
PRODUCTION MODE	75 m ² /h	150 m ² /h
QUALITY MODE	53 m ² /h	105 m ² /h
FINE ART MODE	27 m ² /h	53 m ² /h



4 or 8 HHead
Konica Minolta
KM 512i



High Resolution Excellent
Printing Quality



Silicone Heating System
Adjustable in Pre-Printing,
Printing Plate and Post-
Printing Phases



Japanese Technology
Panasonic Servo Motor

INNO

The Solvent - Inkjet



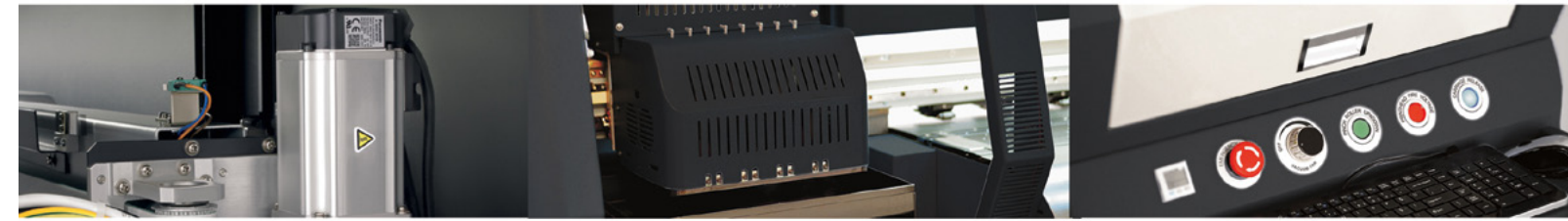
KONICA MINOLTA | Panasonic

2880
dpi

2880 dpi printing quality, automatic media measuring system, LCD control panel, adjustable local halogen heaters, LED lighted printing area, automatic pinch roller control.

Technical Specifications

Printing Heads	KM 1024
Printhead Quantity	4 - 8
Drop Volume	14 Pl.
Colour Scale	CMYK
INK	Solvent / Eco Solvent
Drying System	INFRARED & Heater
Print Width	320 cm
Print Resolution	2880 dpi
Printing Speed Up to	140 m ² /h
RIP Software	Photo Print 11
Power Requirement	230 V (+/-) 10% / 22 A / 50 Hz
Machine Size	950mm x 4800mm x 1520mm
Machine Weight	750 kg.



SILICONE HEATING SYSTEM
Adjustable in Pre-Printing,
Printing Plate and Post-Printing
Phases



PANASONIC
Servo Motor Transmission System



EASY
Print Software (Lyprint)



HALOGEN and INFRARED
Drying System
+ Fan Drying

PRINT SPEED	INNO CLASSIC	INNO PRO
DRAFT MODE	70 m ² /h	140 m ² /h
PRODUCTION MODE	35 m ² /h	70 m ² /h
QUALITY MODE	18 m ² /h	35 m ² /h
FINE ART MODE	9 m ² /h	18 m ² /h



4 or 8 Head
Konica Minolta KM
512i



Very High Resolution
Excellent Printing Quality



Silicone Heating System
Adjustable in Pre-Printing,
Printing Plate and Post-
Printing Phases



Japanese Technology
Panasonic Servo Motor

MAXIMA

The Solvent - multitalent



2880
dpi

KONICA MINOLTA | Panasonic



4,6 or 8
Konica Minolta 512 Printing Heads
9-14 PL



PANASONIC
Transmission System



2880 DPI
High Quality



HALOGEN and INFRARED
Drying System
+ Fan Drying

PVC Flex Banner, Backlit Film, Photopaper, Billboard Paper, Flex, Textile, Mesh etc. all of your printing needs, with great indoor quality and outdoor durability with a printing speed up to 90 m² per hour and perfect printing quality, it provides high productivity for your business.

Technical Specifications

Printing Heads	KM 512
Printhead Quantity	4 - 8
Drop Volume	14 Pl.
Colour Scale	CMYK
INK	Solvent / Eco Solvent
Drying System	INFRARED & Heater
Print Width	320 cm
Print Resolution	2880 dpi
Printing Speed Up to	90 m ² /h
RIP Software	Photo Print 11
Power Requirement	230 V (+/-) 10% / 22 A / 50 Hz
Machine Size	900mm x 4600mm x 1350mm
Machine Weight	650 kg.

PRINT SPEED	MAXIMA CLASSIC (512x4)	MAXIMA PRO (512x8)
DRAFT MODE	45 m ² /h	90 m ² /h
PRODUCTION MODE	22 m ² /h	45 m ² /h
QUALITY MODE	11 m ² /h	22 m ² /h
FINE ART MODE	5 m ² /h	11 m ² /h



Silicone Heating System
Adjustable in Pre-Printing,
Printing Plate and Post-
Printing Phases



Japanese Technology
Panasonic Servo Motor



4 - 8 Colours
Solvent or Eco Solvent
INK



ATECH

SERVICE



Trained Engineers

WAREHOUSE



Accessories, Media & Spares

EMERGENCY



24 x 7 response

INK-EXPRESS



Fast Delivery or consignments available (

Printable medias, textiles, vinyls, laminates available from stock



www.liyu-dms.com

Please contact



Atech Ltd
15 Little Mundells
Welwyn Garden City
AL7 1EW
01707 373738
enquiries@atech.co.uk
www.atech.co.uk

LIYU DMS GmbH
Maschinenvertrieb
Zum Flugplatz 29
32457 Porta Westfalica
GERMANY